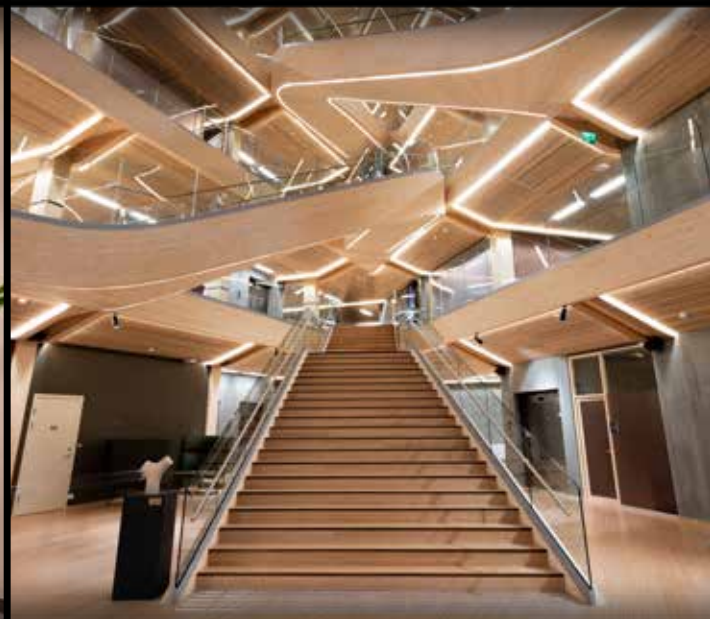




The Light Group



PROJECTS





STAVANGER FINANCIAL PARK

Close to the port of Stavanger, Norway's second largest financial group, SpareBank 1 SR-Bank, has opened its new Headquarters. With seven floors, the triangular wooden high-rise can be seen from afar. The administration building is the largest of its kind in Scandinavia, and its supporting structure is made of wood.

With a total area of 22,600 m² it attracts international attention. Wood and glass dominate the façade. Even in the dark, the combination of wood and glass is visible from outside. A special lighting concept using SLC Neon Full Flex Silicone Strips as well as SLC LED-Strips in profiles accentuates the wood details and lines inside the building. This puts the architecture in the right light at all times.

The challenge of the project was to create a uniform light line when using different LED strips. A special production of the SLC LED strips made this possible.

Partner: Lyskomponenter As
Client: Finansparken Bjergsted
Building contractor: Veidekke Entreprenør
Technical service provider: DNF
Architect: Helen & Hard and Saaha architects
Interior designer: IARK













HOTEL CALEDONIEN

The Caledonien is one of the oldest hotels in Kristiansand and has been completely modernized in 2017-2019. The outer facade and important areas of the interior were renovated and equipped with SLC LED strips.

In the interior lighting, modern bathrooms, stylish staircases and inviting corridors have been staged by using SLC LED strips.

The facade is equipped with over 1.000m RGBW LED-Strips, the two sides of the highest hotel, can be configured differently via DMX control.

The project attracted a lot of attention in the media. The hotel is today a popular landmark with its characteristic vertical light lines. Find a big event in Kristiansand the hotel changes its colours and receives a lot of attention.

















NICK & JONNIES RESTAURANT & BAR

The redesign of Nick & Jonnie's Restaurant & Bar in Stavanger has managed to create a perfect meeting place: modern local lighting that combines attractive ambient lighting with effect lighting.

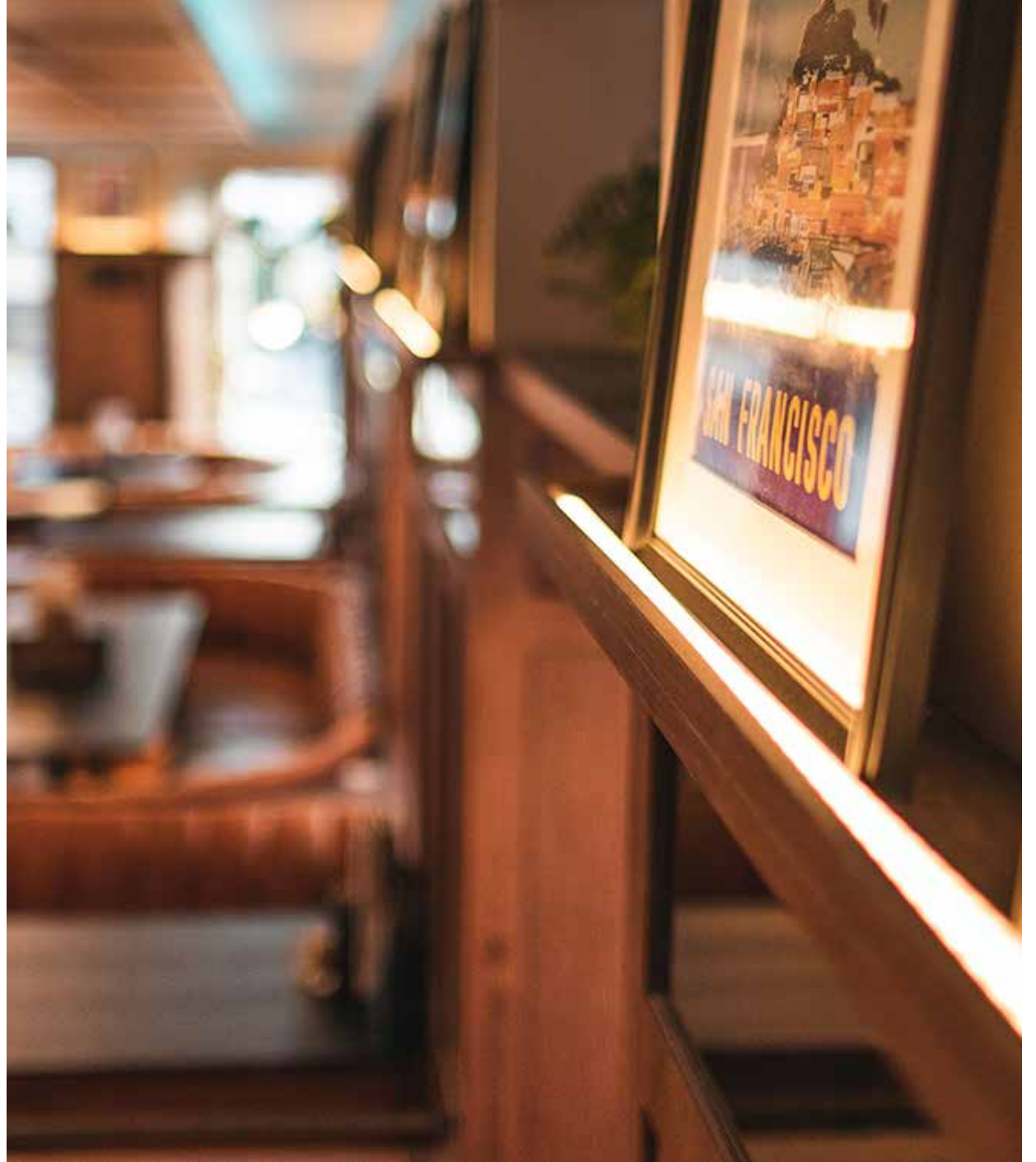
The lighting concept with SLC LED strips creates a relaxed and at the same time eventful room atmosphere. Indirect lighting, such as the installation of LED strips under the seating group or the installation of LED strips in the wine shelves, the bar and the picture rails, creates atmospheric accents.

The ceiling lighting of the colour-coded LED strips harmoniously underlines the stucco ornaments, column and ceiling decorations.

Installation:: Relatek Elektro AS

Photograph: Eivind Sæthre



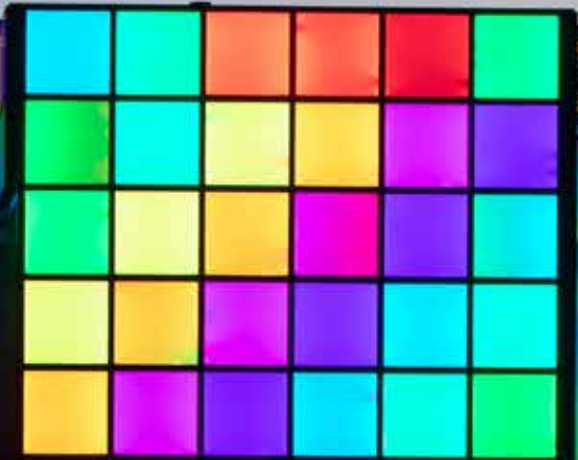






Montana
GRILL

MONTANA GRILL BURGERS RIBS STEAKS





PLEXON

The Plexon is a shopping centre in Norway. The artful exterior facade of the entrance area was realized with our SLC DMX controllers. Digital LED strips can be controlled individually via DMX control and thus provide these impressive effects.





SLETTVOLL

The Light Group has supplied the lighting components for the new premises of Slettvoll - a furniture store in Kristiansand. Built-in LED strips in shelves provide for an even and fine light of products and textiles.

With SLC Full Spectrum LED strips, which have a perfect colour rendering of CRI 98, furniture, objects and textiles are perfectly presented in their natural colour.

The lighting design is effective and modern. It ensures a clear product presentation and thus creates additional incentives to buy.







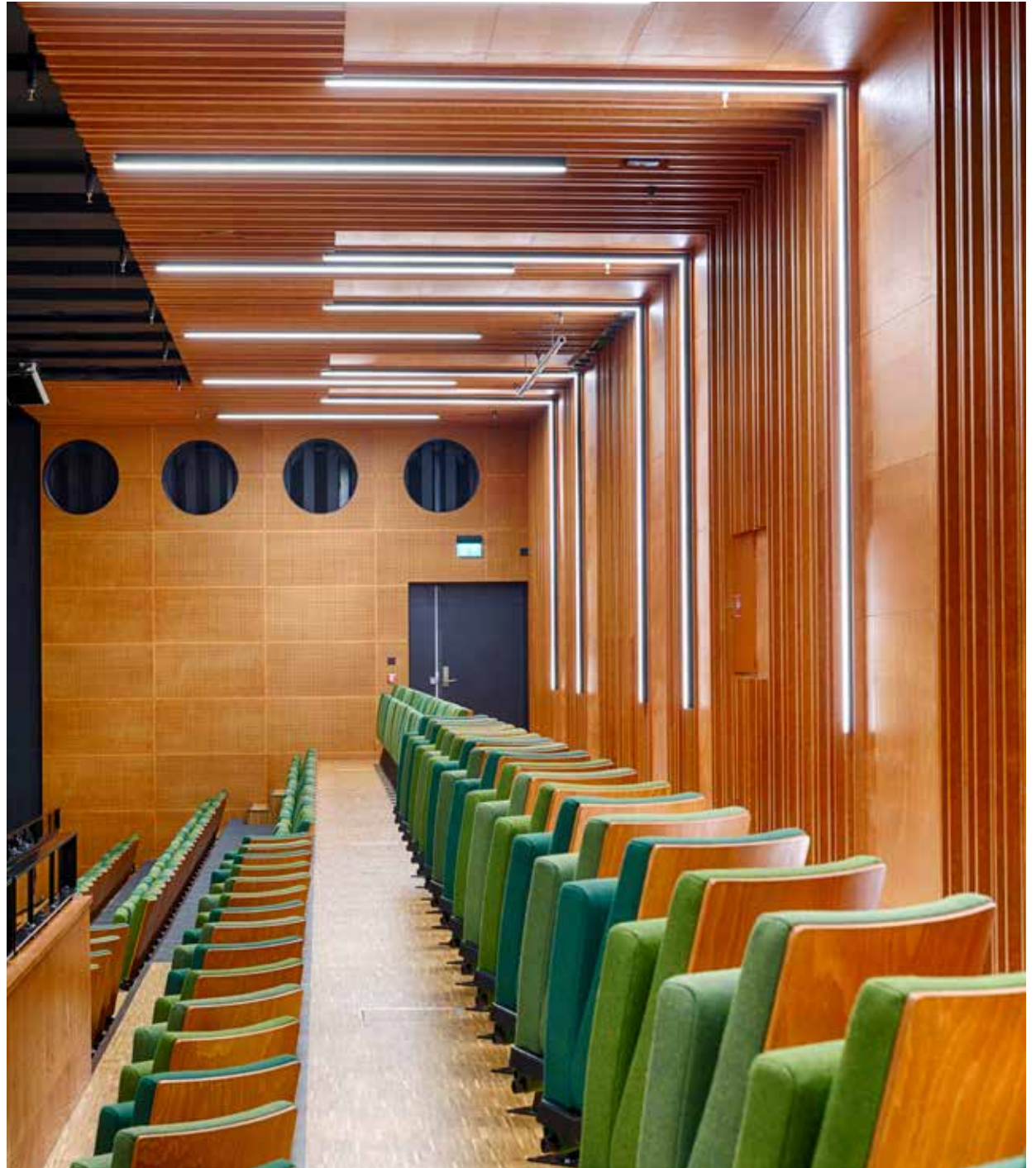


Q42

The Q42 is a multi-purpose building complex, which was built in 2016-2017. It houses residential units as well as a hotel and an impressive concert hall, which is also used for events.

For the Q42 building in Kristiansand, The Light Group supplied the complete lighting. Outside the building the facade and the roof garden were highlighted.

The LED-strip lighting of the concert hall and event space is particularly noteworthy. Here it is wonderfully demonstrated that LED strips do not only set accents and act as indirect light. LED strips provide excellent ambient lighting and offer high lumen and energy efficiency.









RESIDENTIAL

Be inspired by our reference projects from the living area. On the following pages you will see creative lighting solutions with SLC products.

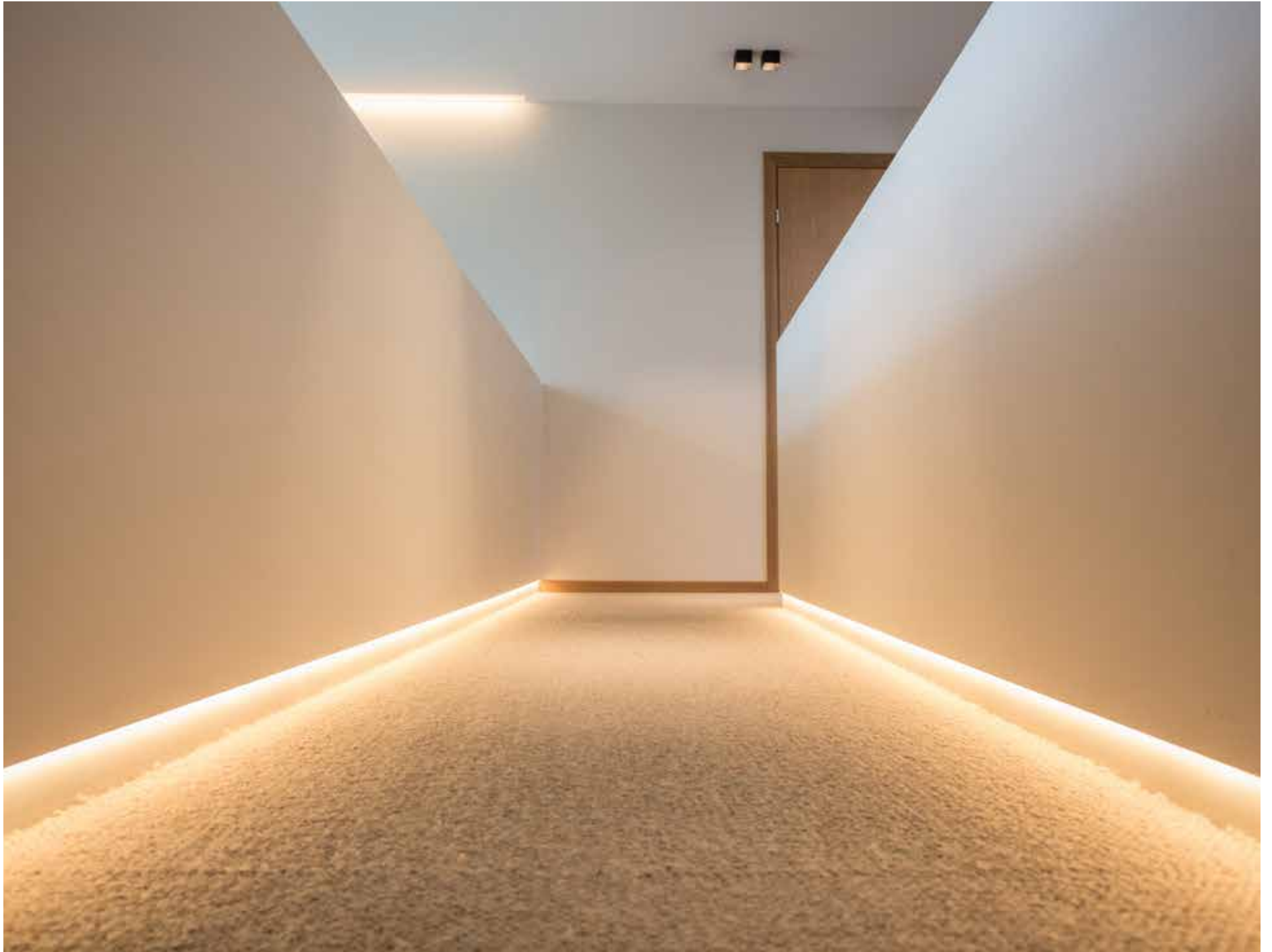
LED strips can create a discreet indirect light, highlight details or be used as primary lighting. SLC LED-Strips can be dimmed and tailored to any type of installation - indoor or outdoor.

Whether lighting for fireplaces, low or TV boards; effective integration of LED strips into the ceiling or the lighting of corridors: we are able to realize many special solutions, be it the length of the profiles, the length of the LED strips or the connection cables. We also produce special LED strips in special solutions according to your wishes and requirements. Please contact us for such projects.













MODERN HOLIDAY HOME

For this project, The Light Group developed LED strips, recessed luminaires and control products.

Our Norwegian partner, Lyskomponenter, carried out the project together with the owner of a holiday home. The owner wanted the new holiday home to have functional and attractive lighting in the interior. The look should be modern, innovative and individual.

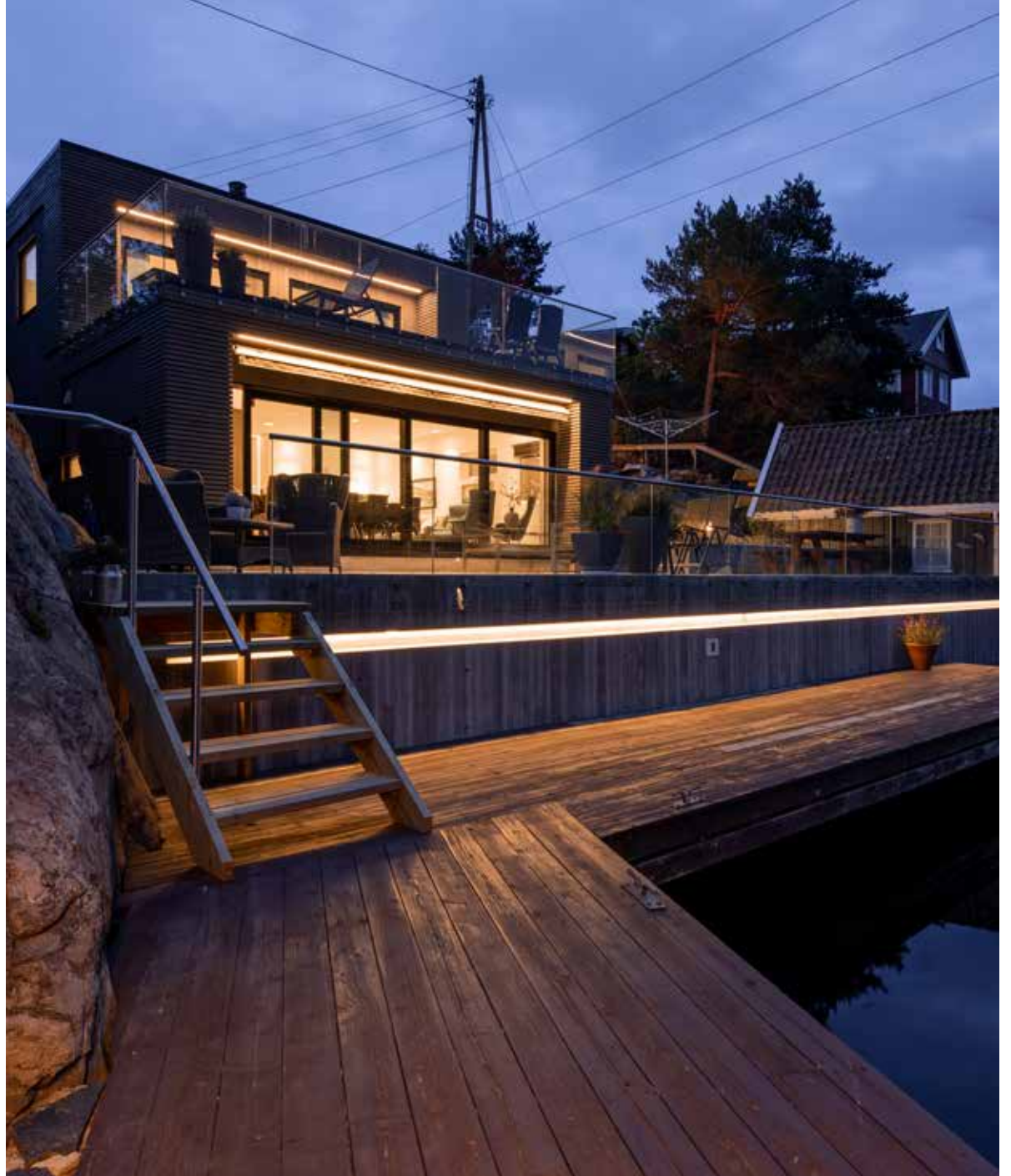
For the exterior lighting there was only one wish: the lighting should be as hidden as possible - and still give a beautiful and powerful light.

The desire for as little visible light as possible was realised by SLC LED strips. These are laid in a black profile with a black cover to blend with the dark grey colour of the wall and ceiling.

Using a recessed profile is ideal because it allows the wood to move easily. In the case of the stairs, the profile has been mounted so that the light is directed towards the mountain. This created a successful staircase lighting.

An effective LED strip was embedded in the pier. Here a niche was removed during concreting. In this case a corner profile was used (a standard profile can also be used).













THE IRON AGE FARM

The Iron Age farm (Jernaldergården) in Ullandhaug has been rebuilt on the original remains and ruins of a farm from the time of the migration of peoples, ca. 350 - 550 AD, and is the only one of its kind in Norway. The farm is a living open-air museum where you can experience what everyday life was like before the Viking Age.

How do you light up a farm from old times, long before lighting was part of society? With great respect for history, the task was solved with hidden, indirect lighting. All built-in lighting components are made by SLC.

With LED strips mounted on the beams, the courtyard received hidden, indirect lighting up to the ceiling. The LED strips under the benches can be dimmed. Here the light colour 2700K was used to create a warm and pleasant light that creates the right atmosphere.

It is a unique feeling to sit by the fireplace and know that 1500 years ago the farmer's family had gathered at exactly this hearth.



